

ZENworks® Configuration Management 10 SP2 & SP3

Overview and Features

Novell®

Agenda

- ZENworks Configuration Management 10.2
- ZENworks Configuration Management 10.3
- Marketing
- Demonstration
- Q&A

ZENworks Configuration Management 10.2 New Features

The bottom of the slide features a series of five horizontal, glowing white lines that fade out towards the right, set against the blue background.

Upgrading to ZCM 10.2

- ZCM Primary Servers
 - 10.1.x
- ZCM Managed Devices
 - 10.0.3 and later
- Use System Update

Configuration	Registration	System Information	Asset Inventory	Asset Management	System Updates		
Available System Updates							
Action ▾ Auto Refresh ▾							
<input type="checkbox"/> Update Name	Release Date	Download Date	Applied Date	Status	Importance	Target Type	
<input type="checkbox"/> SP 2 for ZENworks 10 (10.2) RC2 - MUST BE APPLIED TO RC1_ZONE	Apr 6, 2009			Baselined	Mandatory	All Devices	
<input type="checkbox"/> Apr 2009 PRU	Apr 2, 2009	Apr 22, 2009	Apr 22, 2009	Baselined	Moderate	All Devices	
<input type="checkbox"/> Support Pack 2 for ZENworks 10 (10.2) RC1 - REQUIRES BETA2	Mar 17, 2009			Baselined	Mandatory	All Devices	
<input type="checkbox"/> Support Pack 2 for ZENworks 10 (10.2) Pre_Beta2	Feb 24, 2009			Available	Mandatory	ZENworks Servers	
<input type="checkbox"/> Support Pack 2 for ZENworks 10 (10.2) Beta2	Feb 24, 2009			Baselined	Mandatory	All Devices	
1 - 5 of 5 show 5 ▾ items							
Deploying System Updates							
Action ▾							
<input type="checkbox"/> Update Name	Start Schedule	Reboot Behavior	Stage	Status	Pending	Successful	Failed
<i>No items available.</i>							
Deployment Stages							
Action ▾ Rename Delete Move Up Move Down							
<input type="checkbox"/> Ordinal	Stage Name	Stage Members	Staging Behavior	Reboot Behavior	Stage Timeout		
<i>No items available.</i>							

Platform / Managed Device Support

- Support for the following server platforms:
 - SUSE Linux Enterprise Server 10 SP2 (SLES 10)
 - Open Enterprise Server 2 SP1 (OES Linux)
- Support for the following Citrix platforms as managed devices and Windows Satellite devices:
 - Citrix* XenApp MetaFrame XP
 - Citrix XenApp Presentation Server 4.0
 - Citrix XenApp Presentation Server 4.5
- Managed Devices
 - Windows Vista SP2

Standalone Product Options

- Standalone products
 - ZENworks Configuration Management
 - ZENworks Asset Management
 - > Related notes: ZENworks Patch Management still requires ZCMAsset Inventory for UNIX/Linux requires ZCM or ZAM
- Flexible product installation and administration
 - Installation and evaluation options allows you to choose:
 - > which products to install/activate (in product or evaluation mode)
 - > to evaluate products post install (products have independent eval clocks)
 - Administration is simplified and agent footprint is minimized
 - > Products not installed/activated do not appear in ZCC, have server-side processes disabled and related services removed from the agent

ZENworks Control Center

- Activate / Deactivate a product in the ZENworks Control Center.
- View information from Novell about current top issues, news updates, promotions...
- Drill down into Asset Management

Product Activation - ZENworks 10 Asset Management

Evaluate/Activate product

Use Evaluation

Product License Key :

Deactivate product

Message Summary

	✖	⚠	✔	Total
Servers	0	0	1	1
Workstations	0	0	1	1
Policies	0	0	1	1
Bundles	0	0	258	258

Device Hot List

	✖	⚠	Type	Item
1	0	0	🖥️	huskyxp1

show 5 items

Asset Management

	✖	⚠	✔	Total
Catalog Products	0	0	0	0
Discovered Products	12	0	0	12
Licensed Products	0	0	0	0
Contracts	0	0	0	0
Documents	0	-	0	0

ZENworks News Alerts

Show Category: Any

<input type="checkbox"/> News Alert	Category	Date
<input type="checkbox"/> ZCM logging self-service TID	SUPPORT	Jan 8, 2009 2:00:00 PM

Save time and effort tracking down questions and issues on ZCM 10 by using the ZCM 10 debug logging TID. This Technical Information Document (TID) contains the log files that Novell Technical Services uses to troubleshoot problems. The output of many of these log files can be monitored real-time with tools such as <http://tailforwin32.sourceforge.net/> on Windows and the native "tail -f" command on Linux.

Last Refreshed: 4/27/09 7:29:07 AM

show 5 items

ZENworks Adaptive Agent

- You can uninstall, enable, or disable the following Adaptive Agent features:
- Can be done on a Workstation Folder level

Agent Features			
Bundle Management	<input checked="" type="checkbox"/> Installed	<input checked="" type="radio"/> Enabled	<input type="radio"/> Disabled
Policy Management	<input checked="" type="checkbox"/> Installed	<input checked="" type="radio"/> Enabled	<input type="radio"/> Disabled
Asset Management	<input checked="" type="checkbox"/> Installed	<input checked="" type="radio"/> Enabled	<input type="radio"/> Disabled
Image Management	<input checked="" type="checkbox"/> Installed	<input checked="" type="radio"/> Enabled	<input type="radio"/> Disabled
Patch Management	<input checked="" type="checkbox"/> Installed	<input checked="" type="radio"/> Enabled	<input type="radio"/> Disabled
Remote Management	<input checked="" type="checkbox"/> Installed	<input checked="" type="radio"/> Enabled	<input type="radio"/> Disabled
User Management	<input checked="" type="checkbox"/> Installed	<input checked="" type="radio"/> Enabled	<input type="radio"/> Disabled

Satellite Devices

- A SUSE Enterprise Linux server-grade device performing satellite roles can manage 1000 devices.
 - SLES 10 on the 32-bit (x86) and 64-bit (x86-64) architectures (Intel* and AMD* Opteron* processors)
 - SLES 10 SP1 on the 32-bit (x86) and 64-bit (x86-64) architectures
 - SLES 10 SP2 on the 32-bit (x86) and 64-bit (x86-64) architectures
 - OES Linux 2 SP1 on the 32-bit (x86) and 64-bit (x86-64) architectures
- Deploy agent via ZCC

Remote Management

- Perform Remote Management operations on a managed device that is on a private network or is on the other side of a firewall or router that is using NAT (Network Address Translation).

The screenshot shows a configuration dialog box for remote management. The fields are as follows:

Device	HuskyXP1
Operation	Remote Control
Authentication	Rights
Port :	5950
Session mode	<input checked="" type="radio"/> Collaborate <input type="radio"/> Shared <input type="radio"/> Exclusive
Session encryption	<input checked="" type="checkbox"/>
Enable Caching	<input checked="" type="checkbox"/>
Dynamic Bandwidth Optimization	<input checked="" type="checkbox"/>
Enable logging	<input checked="" type="checkbox"/>
<input type="checkbox"/> Route Through Proxy	
Proxy	
Proxy Port	

Buttons: OK, Cancel

Reporting

- Installation of Reporting Server in the languages supported by ZENworks Configuration Management.
- Re-designed layouts for Predefined reports.
- Support for 64-bit (x86-64) architecture (Linux & Windows)
- Support for the Windows 2008 platform.
- Use of BusinessObjects Reporting Engine XI R3.1 instead of BusinessObjects Enterprise Reporting Engine XI R2.2.
- The reporting universes have been enhanced to improve the user experience in custom reporting. The custom reports created in the previous releases of ZENworks Configuration Management are not transferable to this release of the Reporting Server.


Imaging

- Support for Ghost imaging format (.gho)
- Multi disk support for
 - Windows Imaging format (.wim)
 - Ghost (.gho)
- Imaging operation on a Linux Satellite device

Third Party Imaging Settings

You must be running Windows XP SP2, 2003 SP1/R2 or Vista. Installing WAIK on XP or 2003 requires MS .NET 2.0.

Upload WinPE Base Distribution (Requires Windows Automatic Installation Kit)

 [Status](#)

Upload ImageX files to support ^TWhim imaging(ImageX.exe)

[Status](#)

Upload Ghost 8.x or higher files to support Ghost imaging(Ghost32.exe)

[Status](#)

Asset Management

- Key metrics added to ZCC Home Page
- License Allocations
 - Allocate licenses by device and demographic data (site, department, or cost center).
 - Migration Utility Migrates License Allocations data
- New Software Usage data in License Management
 - Usage displayed on Discovered Product lists and in ZCC.
 - Filtering available to view products/installations w/- w/o usage.
- Oracle support in Migration Utility
 - ZENworks Asset Management Migration Utility (10.2) now supports Oracle to Oracle migrations (from 7.5 to 10 SP2).
 - Includes Asset Inventory and Asset Management data.

Patch Management

- Improved management user interface in ZCC
 - Filter by Vendor
 - Dashboard view
 - Improved visibility into additional patch attributes including whether a reboot is required or a patch is superseded.

Patches				
Action ▾				
Patch Name	Impact	Patched	Not Patched	
Adobe APSB08-11 Flash Player 9.0.r124 for IE (Rev 2)	Software Installer	0	2	
Adobe APSB08-20 Flash Player 10.0.12.36 for FireFox (All Languages) (Rev 2)	Software Installer	0	2	
Adobe Reader 9.0 for Windows (Full/Upgrade) (Rev 2)	Software Installer	0	2	
Internet Explorer 7.0 (SEE NOTES) (Rev 3)	Software Installer	1	1	
Microsoft .NET Framework 2.0 SP1 (See Notes) (Rev 3)	Critical	0	2	
Microsoft .NET Framework 3.5 (Rev 3)	Software Installer	0	2	
Microsoft .NET Framework 3.5 SP1 (All Languages) (See Notes)	Software Installer	0	2	
Microsoft (English/MUI) Excel Viewer 2003	Software Installer	0	2	
Microsoft (English/MUI) Word Viewer 2003	Software Installer	0	2	
Mozilla Firefox 2.0.0.18 for Windows (Update)	Critical	1	1	
MS 887606 Update for MSXML 2.0 SP6	Recommended	0	2	
MS 890830 Microsoft Windows Malicious Software Removal Tool (April 2009)	Software Installer	1	1	

Search

Patch Name

Search Reset

Status

Patched

Not Patched

Not Applicable

Include Disabled

Impact

Critical

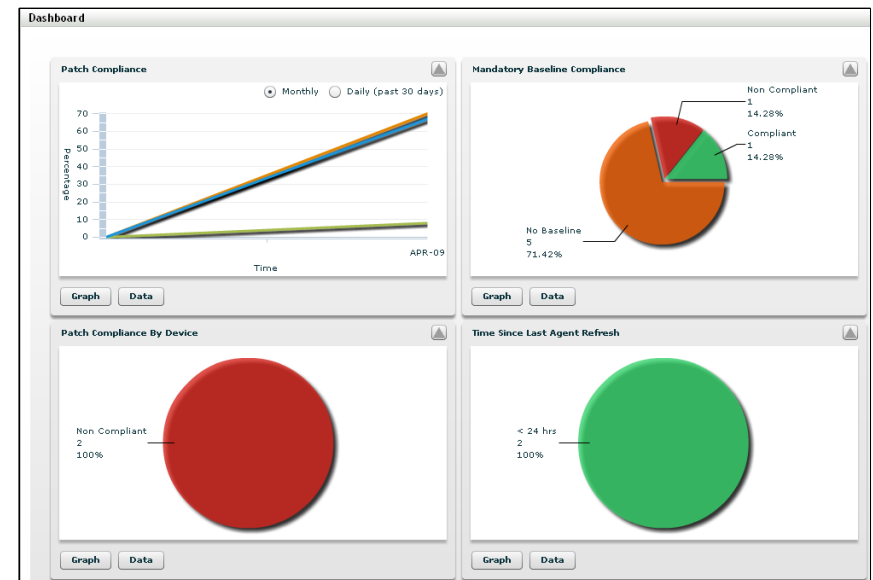
Recommended

Informational

Software Installers

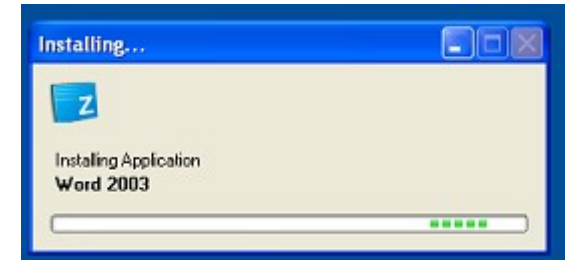
Vendor ALL

Cache Status ALL



Bundles

- Display of Application Installation
- Set System Requirements based on File Version



System Requirements
Specify the system requirements for this bundle and indicate if the application icon should be displayed to the

Show application icon if system requirements fail

Add Filter Add Filter Set Insert Filter ▾ Delete

Combine Filters using: ▾

The following conditions should be effective for this object to be enforced:

File Version ▾ > ▾

Apply **Reset**

Personality Migration

- Span the personality migration data across multiple files with each file limited to a particular size. This will help to store the data in a removable media
- Encrypt the PNP file with a password
- Support to run the bundles that are created by using the Store Personality or Apply Personality actions as a dynamic administrator
- Ability to capture all profiles on a workstation
- Runs as Dynamic Administrator (NOTE: This affects the way profiles are stored, in order to send to a authenticated network share an copy action needs to be added, See Cool Solution <http://www.novell.com/communities/node/8756/storingapplying-personality-authenticated-network-share-zcm-102-and-above>)

ZENworks 10 SP2.1

- Expected by first half of December 2009
- Windows 7 platform fully supported
- SLES/SLED 11 supported operating system for Primary Server & Satellite device
- Firefox 3.0* supported for full management console
- Connection optimizations that increase scalability

*3.0.10 or greater

ZENworks Configuration Management 10.3 New Features

The bottom of the slide features a series of five horizontal, glowing white lines that fade out towards the right, set against the blue background.

ZENworks 10 SP3

- Enhanced branch office support
 - User source authentication via satellite
 - Allow branch office to authenticate to local eDirectory or Active Directory replica
 - Content replication improvements
 - Configure Primary -> Satellite Server content replication throttling and schedule per satellite / per content type
 - Offline content replication for satellites
- New authentication methods
 - Adds Kerberos support for Active Directory or DSFW
 - Adds Shared Secret method to allow Smartcard authentication in conjunction with NMAS and the Novell Client for Windows
- User Source fault tolerance
 - Allow multiple user source connections per Primary or Satellite

ZENworks 10 SP3

- Remote Management Proxy for Linux
 - Allows Linux devices to act as the remote management proxy for remote control through NAT
- ZDM 7 / ZAM 10 integration
 - Allow both the ZAM 10 and the ZDM 7 agents to run on the same Windows workstation
 - Updates to the ZAM migration tool to ensure ZAM and ZDM migrated devices are reconciled
- Automated user based license tracking
 - Inventory based gathering of user and named-user licenses
 - Allows you to easily track licenses that are user based
 - Can use either User Source or inventory data

Campaigns

Additional Resources

- ZENworks Configuration Management Product Information

Download the product evaluation, view the product specs and more!

<http://www.novell.com/products/zenworks/configurationmanagement/>

- Novell Endpoint Management Resource Center:

Videos, White Papers, Webcasts, Fliers, Podcasts and more!

<http://www.novell.com/solutions/endpoint-management/resources.html>



Novell® ZENworks® Configuration Management Offers (Expire Oct. 31, 2009)

- If you own ZENworks Desktop Management (without maintenance), save 33% on upgrade license to ZENworks Configuration Management Standard or Advanced!
- If you own ZENworks Suite Management (without maintenance), save 33% on upgrade license to ZENworks Configuration Management Advanced!

... Also, If You Own and You Buy You Can Get
ZENworks Desktop Management or ZENworks Suite	500+ licenses of ZENworks Configuration Management	Four vouchers to a free four-day ZENworks Configuration Management Advanced Administration technical training online classroom course (first 36 customers)
ZENworks Configuration Management and ZENworks Linux Management as part of Novell Open Workgroup Suite	500+ licenses of Novell ZENworks Extension for Open Workgroup Suite	

Learn More: <http://www.novell.com/promo/moveit.html>

Demonstration

Q&A

Novell®

Unpublished Work of Novell, Inc. All Rights Reserved.

This work is an unpublished work and contains confidential, proprietary, and trade secret information of Novell, Inc. Access to this work is restricted to Novell employees who have a need to know to perform tasks within the scope of their assignments. No part of this work may be practiced, performed, copied, distributed, revised, modified, translated, abridged, condensed, expanded, collected, or adapted without the prior written consent of Novell, Inc. Any use or exploitation of this work without authorization could subject the perpetrator to criminal and civil liability.

General Disclaimer

This document is not to be construed as a promise by any participating company to develop, deliver, or market a product. It is not a commitment to deliver any material, code, or functionality, and should not be relied upon in making purchasing decisions. Novell, Inc. makes no representations or warranties with respect to the contents of this document, and specifically disclaims any express or implied warranties of merchantability or fitness for any particular purpose. The development, release, and timing of features or functionality described for Novell products remains at the sole discretion of Novell. Further, Novell, Inc. reserves the right to revise this document and to make changes to its content, at any time, without obligation to notify any person or entity of such revisions or changes. All Novell marks referenced in this presentation are trademarks or registered trademarks of Novell, Inc. in the United States and other countries. All third-party trademarks are the property of their respective owners.

