



GroupWise on Linux but the Administrator on Windows

Diethmar Rimser
Consultant
diethmar.rimser (at) brainagents.at

Session description



GroupWise has already been migrated to Linux and it is running stable and secure.

You are a GroupWise administrator and there might be some good reasons that your desktop still has to stay on Windows.

This session will show you that **administering a Linux based GroupWise system via Windows** is not a hurdle. Utilities and/or some preparation in the background will solve your request.



- Involved in many GroupWise activities
 - diethmar.rimser(at)groupwise.at
 - still the owner of GroupWise.at
 - responsible for the Austrian branch of Open Horizons D.A.CH
- I started with Novell in 1985!
- CNI since 1994

- In 1996 GroupWise (5) has touched me - since that milestone in my life my business is GroupWise.



ConsoleOne on Linux
Mounting Point
ConsoleOne on Windows
Q & A



ConsoleOne on Linux



GWAVACon

ConsoleOne locally
directly on the server
VNC
putty, X11 redirection and Xming

i.e.: gateway snapins



ConsoleOne on Windows



GWAVACon

Because of Linux paths in the background
no direct connection
connect to ...
gateway snapins!

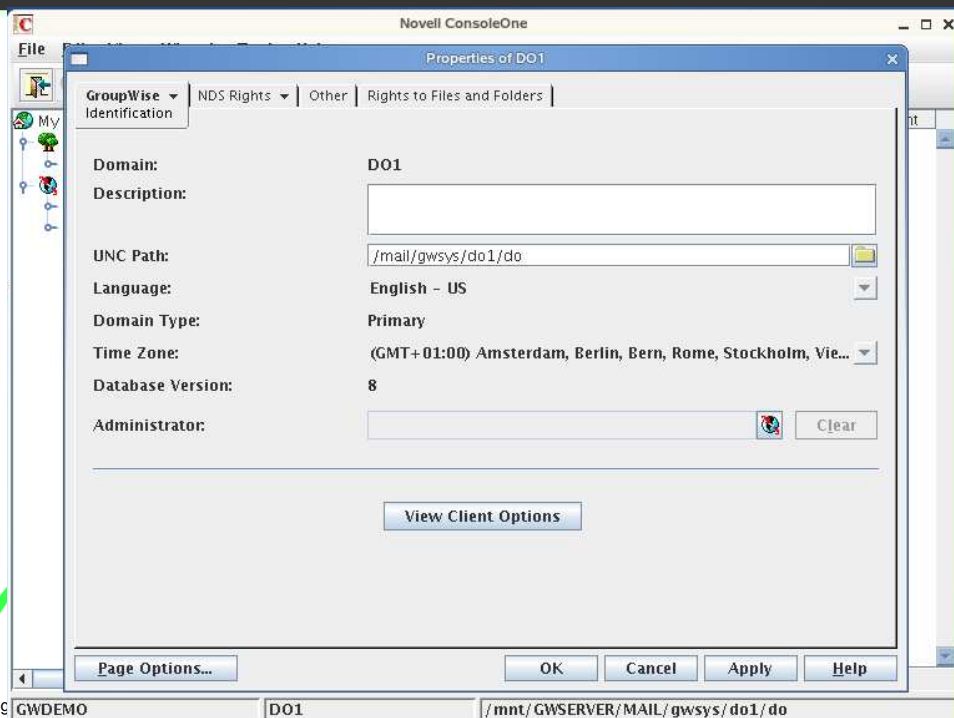
Solution: mount point



Linux path in C1



GWAVACon



7

Mount point for Linux



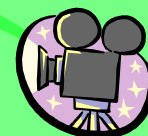
GWAVACon

C1, Tools, GroupWise System Operations, System Preferences ..., Linux Settings

/mnt

within mnt create a link which leads to your GroupWise system

Will be the central anchor of my administration



Mount point for Linux (2)

within mnt create a link which leads to your GroupWise system

my domain database is located in /mail/gwsys/do1/do

Windows will see: GWserver/Volume:gwsys/do1/do
or \\gwserver\volume\gwsys\do1\do

therefore I need a redirection from
\\gwserver\volume to /mail

Within /mnt directory a symbolic link:
ln -s /mail „gwserver+volume“



Special Case NSS-Volumes



NSS volumes will be found at /media/nss (capital letters; i.e. /media/nss/MAIL)

therefore change
\\SERVER\MAIL\groupwise\domain into
/media/nss/mail/groupwise/domain

ln -s /media/nss SERVER

Special Case NSS-Volumes (2)



GWAVACon

ln -s /media/nss SERVER

/mnt

/SERVER (= /media/nss)

/MAIL (= /media/nss/MAIL)

/gwsys/do1/do (= /media/nss/MAIL/gwsys/ ...)

Accessing GroupWise on NetWare



GWAVACon

i.e.: server: nwserver, 10.10.13.150

```
ncpmount -S nwserver -A 10.10.13.100 -U  
.admin.users.company -P novell  
/mnt/nwserver
```



Accessing other linux locations



GWAVACon

i.e.: server: lxserver, share: mail

```
mount -t smbfs -o username root password novell  
//lxserver/mail /mnt/lxserver/mail
```

Accessing Windows based domain



GWAVACon

i.e.: server: mserver, share: mail

```
mount -t smbfs -o username root password novell  
//mserver/mail /mnt/lxserver/mail
```

Automatism



GWAVACon

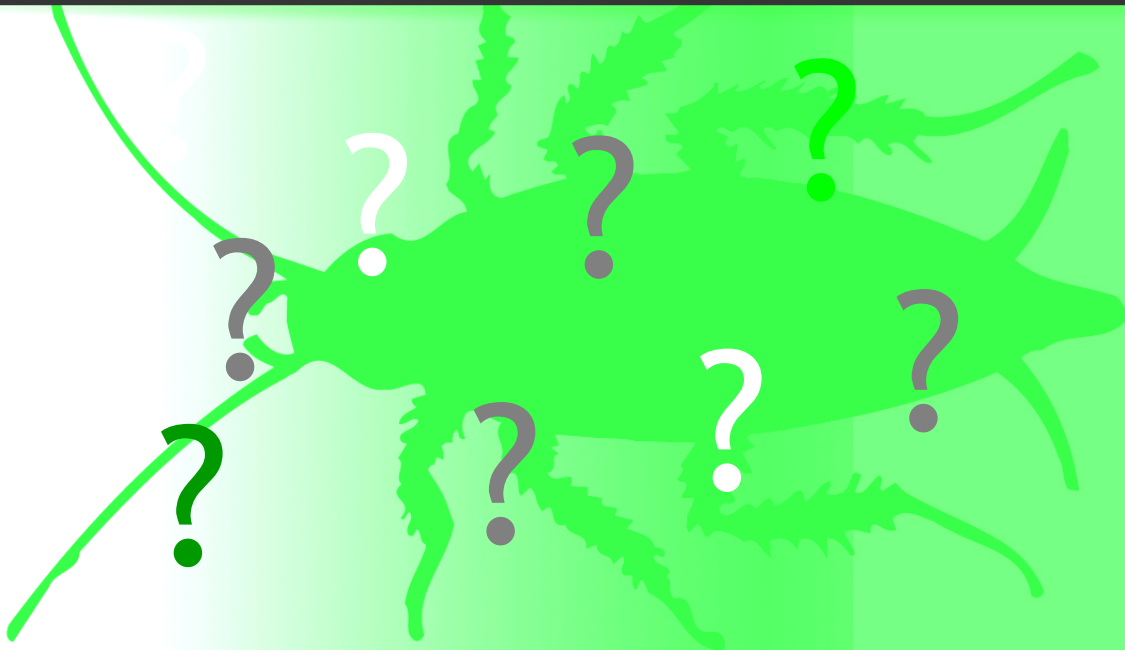
Mounting & dismounting
bash scripts
fstab



Q & A



GWAVACon





Unpublished Work of Novell, Inc. All Rights Reserved.

This work is an unpublished work and contains confidential, proprietary, and trade secret information of Novell, Inc. Access to this work is restricted to Novell employees who have a need to know to perform tasks within the scope of their assignments. No part of this work may be practiced, performed, copied, distributed, revised, modified, translated, abridged, condensed, expanded, collected, or adapted without the prior written consent of Novell, Inc. Any use or exploitation of this work without authorization could subject the perpetrator to criminal and civil liability.

General Disclaimer

This document is not to be construed as a promise by any participating company to develop, deliver, or market a product. It is not a commitment to deliver any material, code, or functionality, and should not be relied upon in making purchasing decisions. Novell, Inc. makes no representations or warranties with respect to the contents of this document, and specifically disclaims any express or implied warranties of merchantability or fitness for any particular purpose. The development, release, and timing of features or functionality described for Novell products remains at the sole discretion of Novell. Further, Novell, Inc. reserves the right to revise this document and to make changes to its content, at any time, without obligation to notify any person or entity of such revisions or changes. All Novell marks referenced in this presentation are trademarks or registered trademarks of Novell, Inc. in the United States and other countries. All third-party trademarks are the property of their respective owners.